



Irish Cruising Club

South and West Coasts of Ireland Sailing Directions

14th edition published February 2016
Amendments to 8 October 2017

DISCLAIMER

We hope that you will find the information contained in these Amendments helpful. Whilst every care is taken to ensure that the information contained in these Amendments is accurate, we hereby formally disclaim any and all liability for any personal injury, loss and/or damage howsoever caused, whether by reason of any error, inaccuracy, omission or ambiguity in relation to the contents and/or information contained within the Amendments or otherwise. © Irish Cruising Club Publications Ltd.

The pages of the book are in two columns, of 55 lines maximum each. Amendments in the main text are shown as L (left) or R (right) referring to column, followed by the line number.

Consolidated Amendments to 27 March 2017

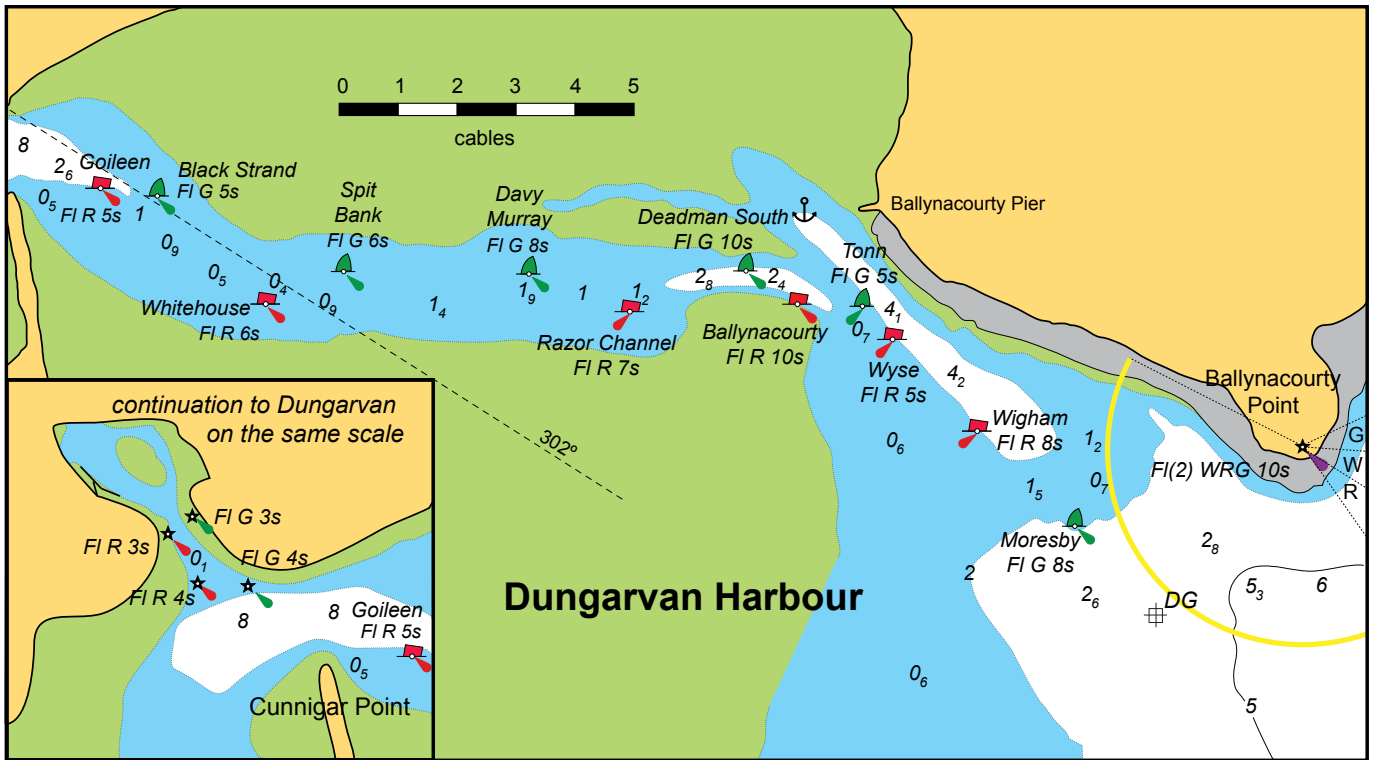
Page 38R, **Dunmore East** harbour: a 60m pontoon for the use of visiting yachts has been installed inside the NE breakwater extension. The pontoon has water and shore power.

Dunmore East yacht pontoon (Peter Mason)



Page 48, Lights & Marks, Dungarvan: delete the sentence “Changes proposed in 2015 are shown on the plan opposite”. Page 49, para “Directions” and Plan: the buoyage scheme for **Dungarvan** has been finalised. The **Deadman South** buoy is further west, and the **Tonn, Spit Bank** and **Whitehouse** buoys slightly further north than shown on the plan on page 49. A new port-hand buoy, **Razor Channel**, has been positioned between the Deadman South and Davy Murray buoys. For “The plan shows...positions” read “The plan shows the channel with the buoyage as revised in May 2016”. Delete the sentence “From this position...close to starboard”.

Replace the plan with the one below, which also shows the characteristics of the new buoys.



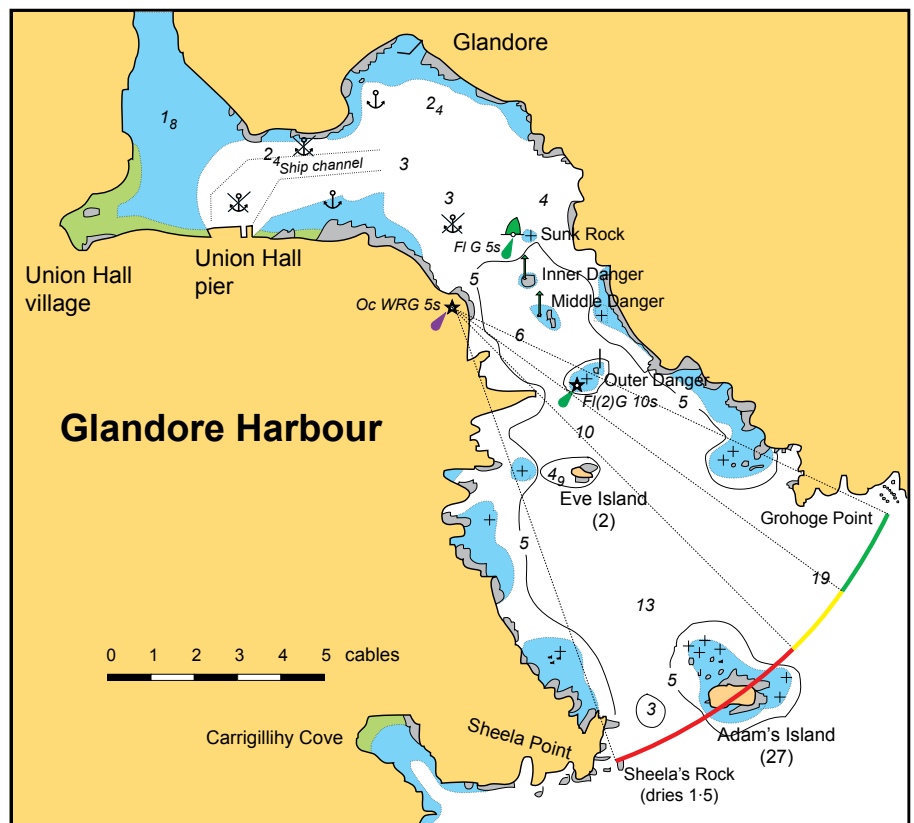
Page 60L line 9: the mobile phone number for the **Royal Cork YC** marina has changed to 087 289 9190.

Page 72, Lights and Marks: **Bulman** buoy now has AIS.

Page 82, Lights and Marks, and page 83L line 22: the channel in **Clonakilty Harbour** between Wine Rock (at the entrance) and the pier at South Ring (on the R in the aerial photograph on page 83) has been marked by two starboard-hand perches and two buoys, one port- and one starboard-hand. These marks are lit but the perch on Wine Rock remains unlit.

Page 85, Lights and Marks, and Plan on page 83: A new sectored light has been established at **Glandore Harbour**. Add “**Glandore**, steel tower Oc WRG 5s 37m 7M, G 294°–304°, W 304°–312°, R 312°–342°, shows white over the approach from the SE, red over Adam’s Island and Eve Island and green over the Outer Danger.” Replace the plan with the one at right.

Pages 100R and 101L, and Plan on p100: Dredging works in the outer basin to the NW of Duffy’s Pier at **North Harbour, Cape Clear** have resulted in some undermining of the old walls, and pending remedial work the basin is unavailable for berthing. The existing deepwater berths at North Harbour are unaffected.



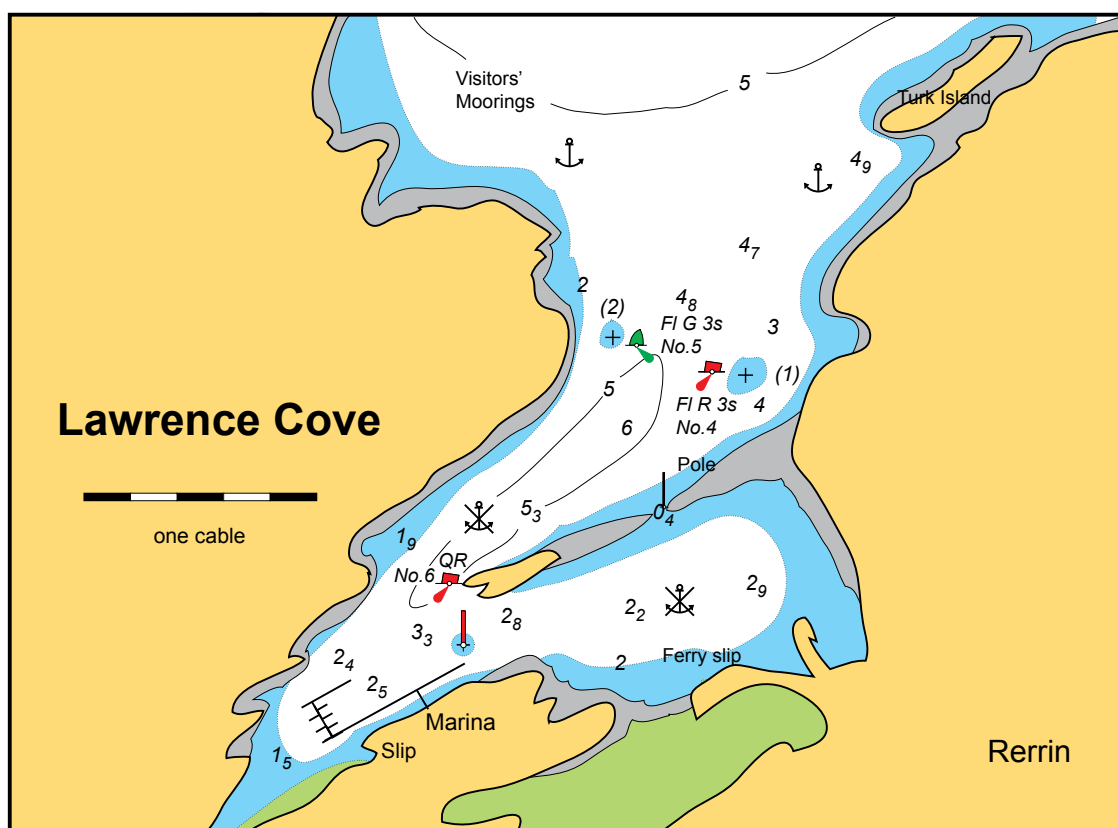
Page 129, Lights and Marks, and page 130: Six buoys (three each SHM and PHM) have been established in the approaches to **Lawrence Cove**. The outermost PHM marks the 1·8m rock N of Turk Island. On page 130R line 15, for “SW of Turk Island...behind the skyline” read:

“SW of Turk Island, rocks on either side of the channel are marked by a pair of buoys. The low island in the centre of the cove to the SW has the remains of a pier on its W end, and is joined to the E shore by a reef which almost entirely dries. (The gap in the reef, with 0·4m at LAT, is marked by a slim pole.) Enter the cove in mid-channel between Turk Island and the W shore, and follow the buoys.”

On page 129, add to list of Lights and Marks:

Lawrence Cove: **No.1** buoy, SHM Fl G 2s, N of Ardagh Point; **No.2** buoy, PHM Fl R 4s, NW of Turk Island; **No.3** buoy, SHM Fl G 4s, E of Ardagh Point (*these two synchronised*); **No.4** buoy, PHM Fl R 3s, **No.5** buoy, SHM Fl G 3s (*these two synchronised*); **No.6** buoy, PHM QR.

Replace the plan on page 130 with the one below.



New buoyage at Lawrence Cove (Brian and Eleanor Cudmore)



Page 135, Lights and Marks, and Plan on p137: The characteristics of the buoys at **Glengarriff** have been changed to Fl G 4s and Fl R 3s.

Page 136L line 25: a restricted area has been established around the disused oil terminal structure at **Whiddy Island**. Give the structure a berth of at least a cable.

Page 140, and Plan on page 141: a 40-berth marina is under construction in **Bantry** and is expected to open in July 2017. There will be a least depth of 3m at the pontoons. The Town pier is not available as a berth for the duration of the works.



Computer simulation of how the new facilities at Bantry will look (Port of Cork Company)

Page 177, photograph: the beacon on **Kay Rock** has been replaced

New beacon on Kay Rock (Kerry County Council)



Page 174L line 3 line 6, **Knightstown**: delete “There are visitors’ moorings”. Under “Facilities” delete PO and filling station. Diesel is best obtained at Cahersiveen.

Page 179, plan of Valentia to Kerry Head: for “Ballybunnion Bay” read “Ballyheige Bay”.

Page 196R line 16, and Plan on page 197: the channel to **Kilrush Marina** has been dredged to 1.5m.

Page 218R line 45, **Ballyvaughan**: the chart sounding at the pool is now 3.7m.

Page 219L line 3: **Carrickadda** is now charted as drying 2.6m.

Page 219L line 47, approaches to **Kinvara**: amend to read “...the Admiralty survey of 1844-50, for the bay south of Parkmore Quay, is still accurate. There are no marks to clear **Goragh Rock** (dries 1.8m) on the S side of Doorus Strait or **Madrallan Rock** (dries 0.8m) on the N side. Steer to pass midway between Fiddoun Island and Doorus Point, along 53°11’·00N.”

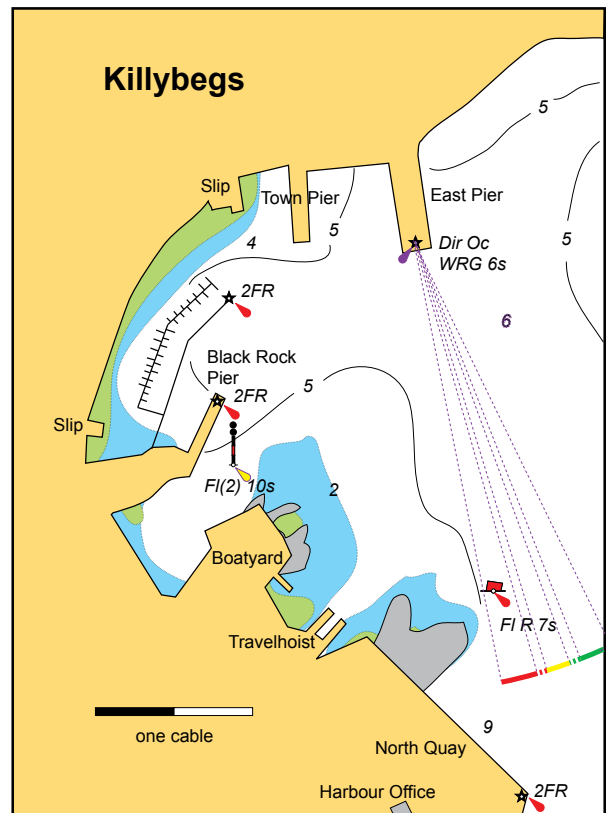
Page 221L line 4: **Black Rock** (New Harbour) is now charted drying 4.6m.

Pages 217 and 223, Dangers: **Black Rock** (WSW of Mutton Island) is now charted drying 1.4m and **Margaretta Shoal** has a least charted depth of 2.2m.

Page 310R line 5: delete the mobile phone number 086 089 0767 for the HM at **Sligo**.



Killybegs marina under construction, May 2016 (Alex Blackwell)



Page 317: a 63-berth marina has been installed at Black Rock Pier in **Killybegs**. The facility comprises a floating breakwater pontoon and a single long gangway pontoon with fingers. It is owned and managed by the Fishery Harbour and the contact is the HM. Replace the plan with the one at R .

Page 318R: a short pontoon has been installed alongside the main (west) pier at **Teelin** (summer only). Priority for its use should be given to the sea angling and sightseeing boats. The pontoon does not restrict access to the rest of the pier.

Page 326, Lights and Marks, and plan on page 323: the range of the principal light on **Aranmore** lighthouse is now 18 miles. The range of the auxiliary (red) light is unchanged.

Pages 354 and 368, chart of radio stations: The UK Maritime and Coastguard Agency has announced that as from September 2017 they will no longer use VHF channels 23, 84 and 86. The new channels will be 62, 63 and 64. This applies to Northern Ireland (Navar, Limavady, West Torr, Black Mountain, Orlock Head and Slievemartin transmitters) but the Irish Coast Guard has no plans to change working channels in the Republic.

Amendments from 28 March 2017

Page 30, Dangers: a depth of 2.5m has been measured on Holden's Bed, 5 cables NNE of the West Holdens buoy at **Rosslare**. (28 March 2017)

Page 317: The marina at **Killybegs** is operational. (See above amendment and plan). There is 5m at LAT at the T head which has four berths for yachts. Electricity and water are not yet hooked up. Amend the HM phone number to 086 048 4175. (18 June 2017)

Page 296, third photo caption: amend to read "Frenchport entrance, looking NW from the S shore towards Eagle Island..." (18 June 2017)

Page 275, **Clare Island**, page 280, **Newport**, and page 284, **Achill Sound**: a series of 24 lighted Special Marks have been placed between Clare Island and the mainland shores to NE and SE, and in the approaches to Newport. These are data collection buoys in connection with research on salmon migration. They may be passed closely. (18 June 2017)

Page 30, Lights & Marks, and plan: the buoys marking the South Shear channel in the approaches to **Rosslare** now flash in sequence, and some characteristics have changed to enable this. South Long buoy (now Fl G 6s) and Splaugh buoy (now Fl R 6s) flash simultaneously, followed a second later by South Holdens (Fl G 3s) and Calmines (Fl R 3s) and two seconds later by West Holdens (now Fl(3) G 9s). (18 June 2017)

Pages 61 and 72, Lights & Marks: **Daunt** buoy has been moved one cable east. For “7 cables” read “8 cables”. (18 June 2017)

Page 132, Lights & Marks: add **Carrigavaddra** buoy, E Card VQ(3) 5s, 2.5 cables ENE of the rock, and amend Carrigavaddra beacon to read “Disestablished former S Card perch”. On page 132R line 12, amend to read “Do not attempt to pass between the old Carrigavaddra beacon and Lonehort Point.” The topmark shown in the photograph of the perch has been removed. (18 June 2017)

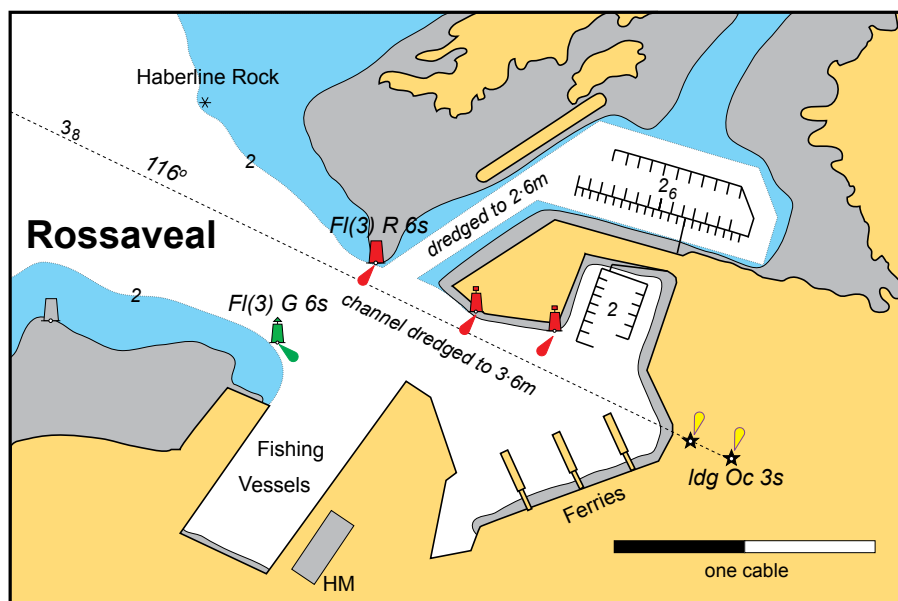
Page 80L line 20 and plan on page 21: the channel in **Courtmacsherry** harbour has been subject to reduction in width. Once past the No.9 buoy (Fl G 15s) stay close to the S side. The W end of the pontoon has 1.6m at LAT and the E end 0.9m. There is no longer room to anchor upstream of the No.7 buoy (QG). (30 Sep 2017)

Page 179, Lights and Marks, and plans on pages 179 and 180: the characteristics of the lights at the entrance to **Dingle** harbour have been changed. The NE side now shows a sectored light Fl WRG 3s 20m 6M, G 310°-328°, W 328°-360°, R 000°-024°, and the SW side Fl(2) 5s 6m 3M. (30 Sep 2017)

Page 181L line 4: the dredged channel in **Dingle** Harbour is steep-sided and care should be taken not to stray out of it. Line 20, note that shower tokens should be obtained from the marina office open 9 to 5. (30 Sep 2017)

Page 223R line 6, and Light and Marks panel: the wave energy test area SE of **Spiddle** has been decommissioned and the four cardinal buoys have been removed. A Special Mark buoy is now at the location. **Margaretta Shoal** and **Black Rock** buoys are now synchronised Fl G and Fl R both 3s. (30 Sep 2017)

Page 225, **Rossaveal**: a new marina basin has been constructed to the NE of the existing one. The basin and access channel are dredged to 2.6m at LAT. The facility is managed by the Harbour. Further details will be published as soon as available. (30 Sep 2017)



Rossaveal, with the new marina basin and pontoons

Page 279L line 9, **Mayo Sailing Club**: add taxi, 087 777 0812. *(30 Sep 2017)*

Page 294, and Plans on pp 291 and 299: **Eagle Island** lighthouse now shows Fl(3) 15s. The range remains at 18M. *(30 Sep 2017)*

Page 301L line 15, **Belmullet**: replace taxi number with 087 315 2051. *(30 Sep 2017)*

Page 317L, **Killybegs**: shore power is now available on the marina but note that the sockets are 32A. For most yachts a 16 to 32A adaptor will be required *(30 Sep 2017)*