



Irish Cruising Club

South and West Coasts of Ireland Sailing Directions

14th edition published February 2016
Amendments to 31 October 2016

DISCLAIMER

We hope that you will find the information contained in these Amendments helpful. Whilst every care is taken to ensure that the information contained in these Amendments is accurate, we hereby formally disclaim any and all liability for any personal injury, loss and/or damage howsoever caused, whether by reason of any error, inaccuracy, omission or ambiguity in relation to the contents and/or information contained within the Amendments or otherwise. © Irish Cruising Club Publications Ltd.

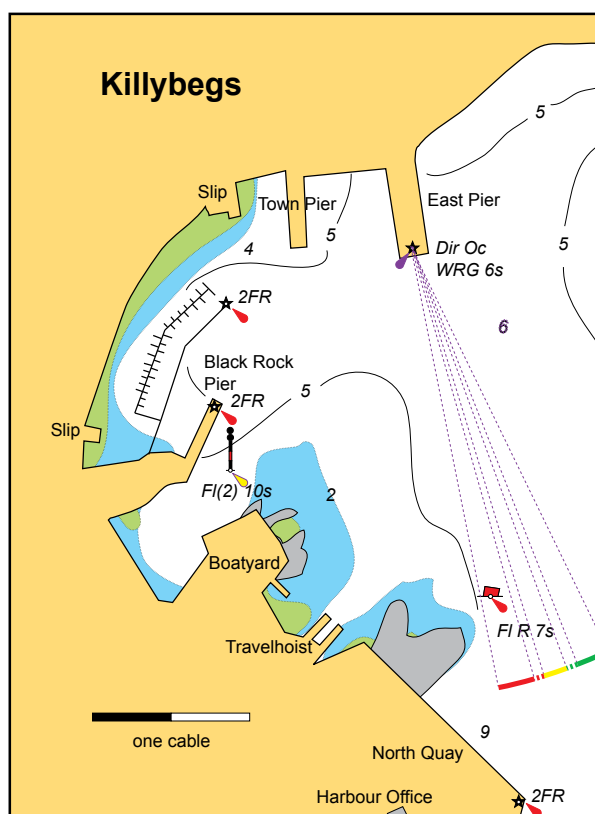
The pages of the book are in two columns, of 55 lines maximum each. Amendments in the main text are shown as L (left) or R (right) referring to column, followed by the line number.

Page 310R line 5: delete the mobile phone number 086 089 0767 for the HM at **Sligo**. (27 February 2016)

Page 317: a 63-berth marina has been installed at Black Rock Pier in **Killybegs**. The facility comprises a floating breakwater pontoon and a single long gangway pontoon with fingers. It is owned and managed by the Fishery Harbour and the contact is the HM. Replace the plan with the one at R (27 February 2016)



Killybegs marina under construction, May 2016 (Alex Blackwell)

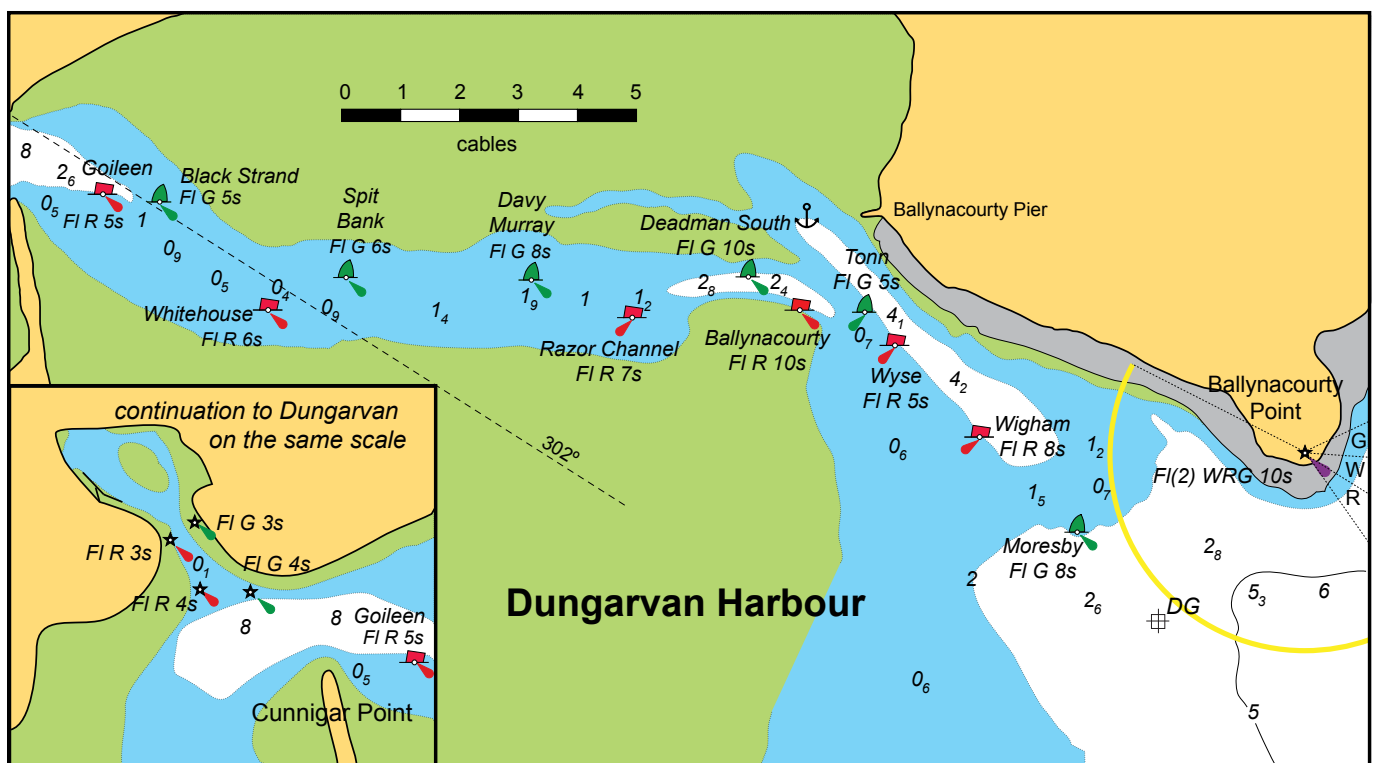


Page 318R: a short pontoon has been installed alongside the main (west) pier at **Teelin** (summer only). Priority for its use should be given to the sea angling and sightseeing boats. The pontoon does not restrict access to the rest of the pier (27 February 2016)

Page 135, Light and Marks, and Plan on p137: The characteristics of the buoys at **Glengarriff** have been changed to FI G 4s and FI R 3s. (24 May 2016)

Page 48, Lights & Marks, Dungarvan: delete the sentence “Changes proposed in 2015 are shown on the plan opposite”. Page 49, para “Directions” and Plan: the buoyage scheme for **Dungarvan** has been finalised. The **Deadman South** buoy is further west, and the **Tonn, Spit Bank** and **Whitehouse** buoys slightly further north than shown on the plan on page 49. A new port-hand buoy, **Razor Channel**, has been positioned between the Deadman South and Davy Murray buoys. For “The plan shows...positions” read “The plan shows the channel with the buoyage as revised in May 2016”. Delete the sentence “From this position...close to starboard”.

Replace the plan with the one below, which also shows the characteristics of the new buoys. (24 May 2016)



Pages 100R and 101L, and Plan on p100: Dredging works in the outer basin to the NW of Duffy’s Pier at **North Harbour, Cape Clear** have resulted in some undermining of the old walls, and pending remedial work the basin is unavailable for berthing. The existing deepwater berths at North Harbour are unaffected. (30 June 2016)

Page 72, Lights and Marks: **Bulman** buoy now has AIS. (2 July 2016)

Page 174L line 3 line 6, **Knightstown**: delete “There are visitors’ moorings”. Under “Facilities” delete PO and filling station. Diesel is best obtained at Cahersiveen. (2 Oct 2016)

Page 38R, **Dunmore East** harbour: a 60m pontoon for the use of visiting yachts has been installed inside the NE breakwater extension. The pontoon has water and shore power. (2 Oct 2016)



Dunmore East yacht pontoon (Peter Mason)

Page 60L line 9: the mobile phone number for the **Royal Cork YC** marina has changed to 087 289 9190. (2 Oct 2016)

Page 218R line 45, **Ballyvaughan**: the chart sounding at the pool is now 3.7m. (4 Oct 2016)

Page 219L line 3: **Carrickadda** is now charted as drying 2.6m. (4 Oct 2016)

Page 219L line 47, approaches to **Kinvara**: amend to read “...the Admiralty survey of 1844-50, for the bay south of Parkmore Quay, is still accurate. There are no marks to clear **Goragh Rock** (dries 1.8m) on the S side of Doorus Strait or **Madrallan Rock** (dries 0.8m) on the N side. Steer to pass midway between Fiddoun Island and Doorus Point, along 53°11'00N.” (4 Oct 2016)

Page 221L line 4: **Black Rock** (New Harbour) is now charted drying 4.6m. (4 Oct 2016)

Pages 217 and 223, Dangers: **Black Rock** (WSW of Mutton Island) is now charted drying 1.4m and **Margaretta Shoal** has a least charted depth of 2.2m. (4 Oct 2016)

Page 129, Lights and Marks, and page 130: Six buoys (three each SHM and PHM) have been established in the approaches to **Lawrence Cove**. The outermost PHM marks the 1.8m rock N of Turk Island. On page 130R line 15, for “SW of Turk Island....behind the skyline” read:

“SW of Turk Island, rocks on either side of the channel are marked by a pair of buoys. The low island in the centre of the cove to the SW has the remains of a pier on its W end, and is joined to the E shore by a reef which almost entirely dries. The gap in the reef, with 0.4m at LAT, is marked by a slim pole. Enter the cove in mid-channel between Turk Island and the W shore, and follow the buoys.”

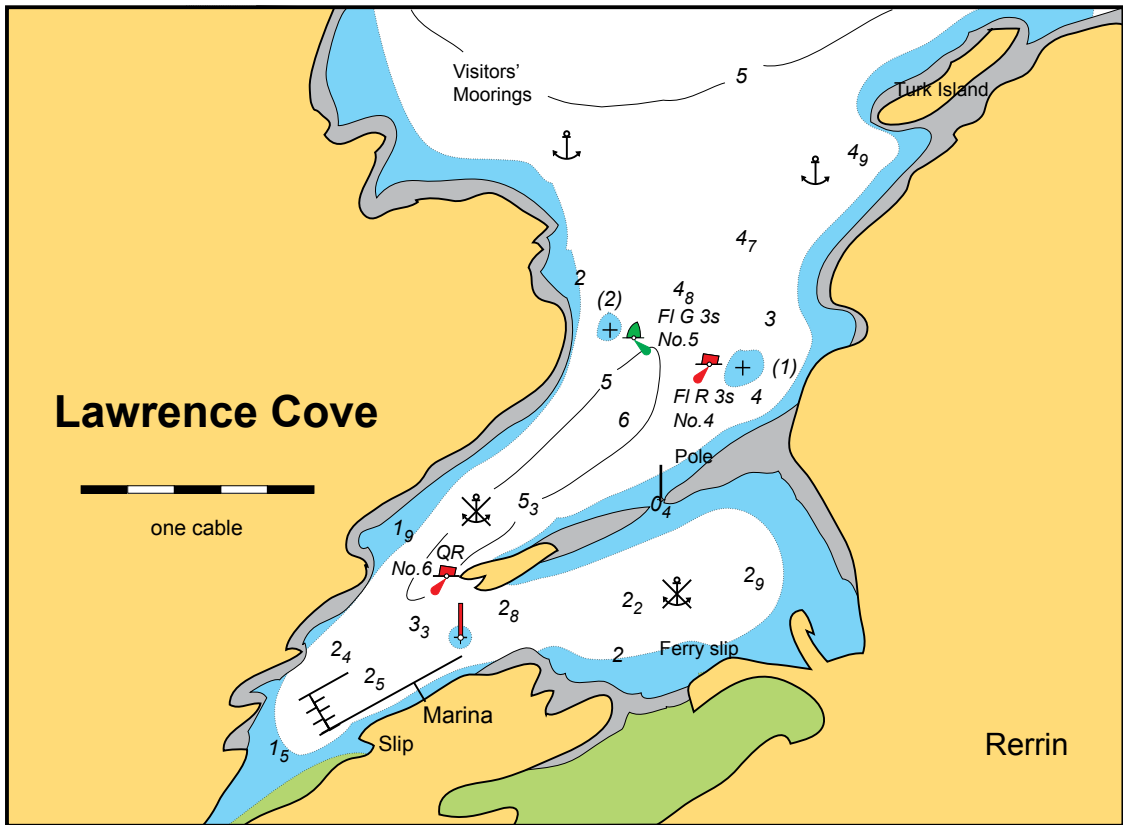
On page 129, add to list of Light and Marks:

Lawrence Cove: **No.1** buoy, SHM Fl G 2s, N of Ardagh Point; **No. 2** buoy, PHM Fl R 4s, NW of Turk Island; **No.3** buoy, SHM Fl G 4s, E of Ardagh Point (*these two synchronised*); **No.4** buoy, PHM Fl R 3s, **No.5** buoy, SHM Fl G 3s (*these two synchronised*); **No.6** buoy, PHM QR.

Replace the plan on page 130 with the one below. (31 Oct 2016)



New buoyage at Lawrence Cove (Brian and Eleanor Cudmore)



Page 326, Lights and Marks, and plan on page 323: the range of the principal light on **Aranmore** lighthouse is now 18 miles. The range of the auxiliary (red) light is unchanged (31 October 2016)

Page 85, Lights and Marks, and Plan on page 83: A new sectored light has been established at **Glandore Harbour**. Add “**Glandore**, steel tower Oc WRG 5s 37m 7M, G 294°– 304°, W 304°– 312°, R 312°– 342°, shows white over the approach from the SE, red over Adam’s Island and Eve Island and green over the Outer Danger.” Replace the plan with the one below. (31 October 2016)

